

Mesh networking features

- Secure dynamic mesh communication with no central control
- Auto search and connect at power up
- Self-healing network with auto-optimizing RF links
- 24 users per group with 5 simultaneous talkers
- Secure comms with AES-256 encryption
- Aux input for audio mixing of external radio comms
- Independent Left / Right receive channels
- Bluetooth® A2DP & HFP profiles supported

Design consultancy for rapid time to market

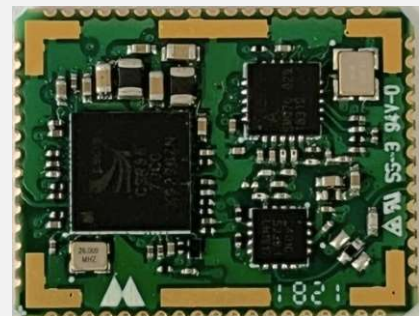
- Design of support PCBA based on clients' form factor
- RF tuning for prototype and pre-production units
- Release of full CAD data for the support PCBA
- Free Trial units available

SonoKlara® audio enhancement DSP algorithms

- High quality proprietary speech codec
- EQ for speech enhancement and transducer profiling
- Compounder on transmit channel
- Ambient noise-dependent volume control
- Glitch suppression to below average speech level to avoid acoustic startle
- Robust Voice Activity Detector with no false trigger in noisy environments
- Voice prompts for ease of user operation

SonoKlara® is ElaraTek's registered trademark for speech enhancement and hearing protection.

Mesh Module



Size : 17mm x 22mm
FCC / EC Certified